

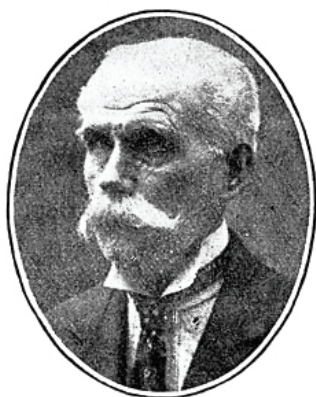
# News and Notes.

FIFTY YEARS OF LENS-MAKING.—Messrs. J. H. Dallmeyer, Ltd., are this year celebrating the jubilee of the foundation in the manufacture of optical instruments. It was in the year 1860 that the late John Henry Dallmeyer commenced the manufacture of telescopes and photographic apparatus, since which time the photographic world has been enriched by a long series of inventions, chiefly in lenses, but including among them also a number of introductions in the way of cameras and other apparatus. In particular, the Dallmeyer portrait lens and the Dallmeyer rapid rectilinear have become known in all parts of the civilised world. The original works of Messrs. Dallmeyer were established on a small scale in old Bloomsbury Street, where the manufacture was conducted for about twenty years. Thence the firm removed to premises at 25, Newman Street, which again for a term of twenty years became the manufactory and offices. Within the past year or two the works have been removed from the centre of London to a factory at Neasden, fully equipped with electric power and modern machinery. This new establishment, although of quite recent erection, has quickly proved insufficient to respond to the expansion in the firm's business, and an adjacent plot of land, three acres in extent, has been acquired, and upon it a new factory is about to be put down.

Messrs. Dallmeyer, while taking a leading place among British



ALEC STRACHAN.



ANTHONY FRAMPTON.

optical houses, have been the pioneers in the telephotographic lens, the commercial introduction of which is due to the late Mr. T. R. Dallmeyer, who in the year 1892 placed the first telephoto lens upon the market. The late Mr. Dallmeyer, it will be remembered, almost simultaneously with Dr. Miethe, had worked out this type of instrument, the full properties of which are treated in his comprehensive volume "Telephotography." Since the introduction of the first types of lens simplified patterns, such as the "Adon" and "Junior Adon," have been introduced.

It is interesting to find that among the workpeople of this old-established optical house are men who for close on half a century have been continuously in the employment of the firm. Alec Strachan, whose photograph is here reproduced, entered the firm in 1860 at the time that the late J. H. Dallmeyer was making his early experiments and for many years has supervised the cementing of large portrait lenses and telescopes of all kinds. Two of his sons, one as foreman, have likewise been employed in the business. Another craftsman of the Dallmeyer firm, Anthony Frampton, has served for an almost equal length of time, having joined the firm as a glass polisher in 1865. For some thirty years past he has

had charge of the centring and edging of lenses. With such a record behind it of technical craftsmanship of a high order, and under its present astute business management, there is every ground for believing that a long and even more prosperous career in the photographic optical trade lies before the firm of Messrs. J. H. Dallmeyer.